

Building Capacity to Support 21st Century Public Health



POPULATION HEALTH DIVISION
SAN FRANCISCO DEPARTMENT OF PUBLIC HEALTH

Protecting and Promoting Health and Equity

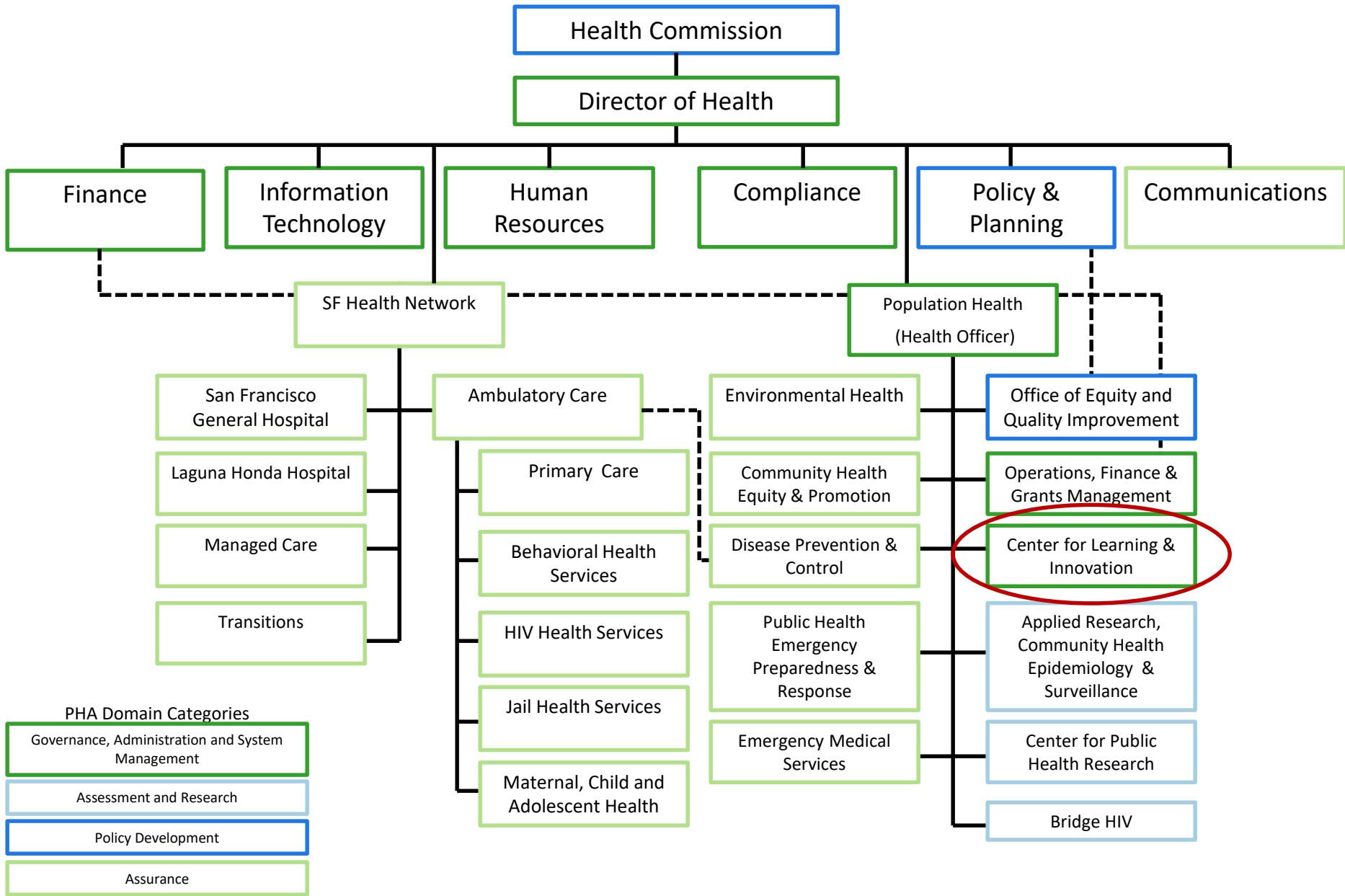
Jonathan Fuchs, MD, MPH

Director, Center for Learning & Innovation

Associate Professor of Medicine, UCSF

June 19, 2018







POPULATION HEALTH DIVISION

SAN FRANCISCO DEPARTMENT OF PUBLIC HEALTH

PROTECTING AND PROMOTING HEALTH AND EQUITY



OUR MISSION

Drawing upon community wisdom and science, we support, develop, implement evidence-based policies, practices, and partnerships that protect and promote health, prevent disease and injury, and create sustainable environments and resilient communities.

OUR VISION

To be a community-centered leader in public health practice and innovation.

STRATEGIC DIRECTIONS

PHD STRATEGIES AND PERFORMANCE MEASURES 2012-2015

PUBLIC HEALTH ACCREDITATION (PHA) DOMAINS CATEGORIES

ASSESSMENT / RESEARCH

1. Superb knowledge management systems and empowered users

STRATEGY 1 : Build an integrated information and knowledge management infrastructure that enables us to monitor health, to inform and guide activities, and to improve staff and systems performance.

PERFORMANCE MEASURES:

- 1.1. Build a strong, highly functional information technology (IT) and technical assistance infrastructure in alignment with Department of Public Health IT strategy.
- 1.2 Establish a highly functional, integrated infectious disease system to collect and report data, and to deliver and monitor public health actions.

2. Assessment and research aligned with our vision and priorities

STRATEGY 2: Integrate, innovate, improve, and expand efforts in community and environmental assessments, research, and translation.

PERFORMANCE MEASURES:

- 2.1 Create an action plan that supports division priorities.
- 2.2 Build cross-section interdisciplinary teams to improve health outcomes and programmatic activities.

POLICY DEVELOPMENT

3. Policy development with collective impact

STRATEGY 3: Conduct effective policy & planning that achieves collective impact to improve health and well-being for all San Franciscans.

PERFORMANCE MEASURES:

- 3.1 Establish a division-wide Performance Management, Equity & Quality Improvement Program.
- 3.2 Establish systems and partnerships to achieve and maintain Public Health Accreditation.
- 3.3 Develop a prioritized legislative agenda and strategic implementation plan to address health status and inequities.

ASSURANCE

4. Assurance of healthy places and healthy people

STRATEGY 4: Lead public health systems efforts to ensure healthy people and healthy places

PERFORMANCE MEASURES:

- 4.1 Establish community-centered approaches that address the social determinants of health and increase population well-being.
- 4.2 Sustain and improve the infrastructure and capacity to support core public health functions, including legally mandated public health activities.

GOVERNANCE, ADMINISTRATION, AND SYSTEMS MANAGEMENT

5. Sustainable funding and maximize collective resources

STRATEGY 5: Increase administrative, financial and human resources efficiencies within the division.

PERFORMANCE MEASURES:

- 5.1 Establish a centralized business office for the division.
- 5.2 Appropriately address the human resource issues regarding civil service and contract employees.
- 5.3 Establish a centralized grants management and development system for the division.

6. Learning organization with a culture of trust and innovation.

STRATEGY 6: Build a division-wide learning environment that supports public health efforts.

PERFORMANCE MEASURES:

- 6.1 Establish a division-wide Professional Development Plan and Workforce Development program.

Our work

- **Internal Capacity Building Assistance (CBA)**
 - Needs Assessment, Training, and Technical Assistance
 - Workforce Development
 - Summer HIV/AIDS Research Program
 - FACES for the Future
- **External CBA**
 - CDC-funded Capacity Building Assistance Program in High Impact HIV Prevention
- **Innovations**
 - California Preterm Birth Initiative
 - Community-based Participatory Research
- **Communications**
 - Digital Storytelling



OUR TEAM



Jessica N. Brown
Manager, Training and
Workforce Development
jessica.n.brown@sfdph.org



Wesley Dayton
HIV CBA Program Coordinator/
Evaluation Specialist
wesley.dayton@sfdph.org



Dr. Jonathan Fuchs
Director
jonathan.fuchs@sfdph.org



Adam Leonard
Lead HIV Prevention
CBA Specialist
adam.leonard@sfdph.org



Gary Naja-Riese
Manager,
Capacity Building Initiatives
gary.naja-riese@sfdph.org



Karina Ng
Program Assistant
Karina.ng@sfdph.org

Determining training and professional development priorities



- **Accreditation Standards**
- **Formal needs assessment**
 - ASTHO PHWINS
- **Public Health core competencies**
 - Council on Academic Linkages
- **Leadership-defined priorities**
 - A3: Developing Our People



Graphic c/o Dr. Aragon

CLI-organized Trainings and Technical Assistance



Capacity Building Series

- Racial Humility
- Project Management
- E-Learning Bootcamp
- Collective Impact Learning Collaborative



Events

- Flu and Infectious Disease Forum

Flu & Infectious Disease Forum

October 25, 2017 | 8:30 am - 12:00 pm

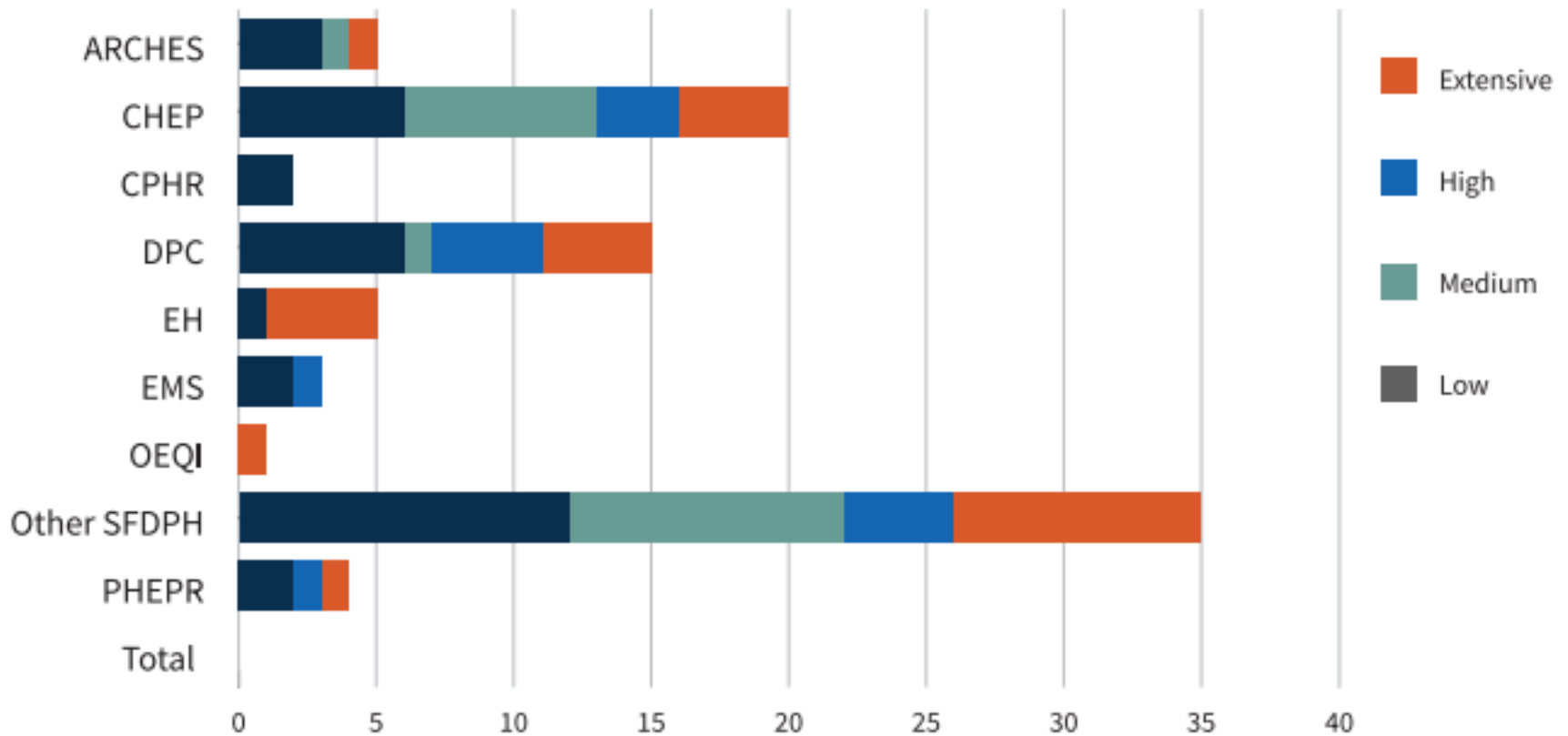
Koret Auditorium, SF Public Library
100 Larkin Street

<http://bit.ly/fluforum2017>



POPULATION HEALTH DIVISION
SAN FRANCISCO DEPARTMENT OF PUBLIC HEALTH
CENTER FOR LEARNING & INNOVATION

Number of Internal CBA Requests, by Intensity Level



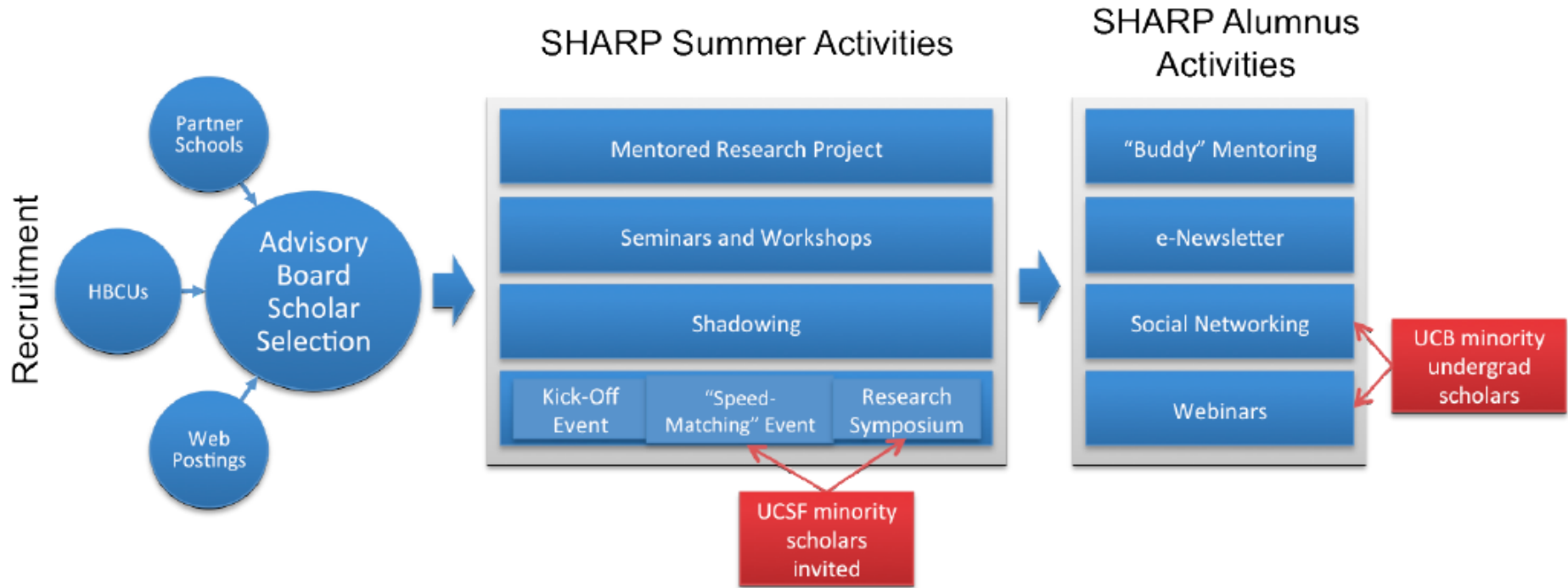
Abbreviations: **ARCHES** (Applied Research Community Health Epidemiology and & Surveillance), **CHEP** (Community Health Equity & Promotion); **CPHR** (Center for Public Health Research); **DPC** (Disease Prevention & Control); **EH** (Environmental Health); **OEQI** (Office of Equity & Quality Improvement); **OF&GM** (Operations, Finance & Grants Management); **PHEPR** and **EMS** (Public Health Emergency Preparedness & Response and Emergency Medical Services).

- Substantial need for support around training, facilitation, and communications in 2017

Summer HIV/AIDS Research Program (SHARP)



National Institute
on Drug Abuse



AIDS Behav
DOI 10.1007/s10461-016-1392-z



ORIGINAL PAPER

Growing the Pipeline of Diverse HIV Investigators: The Impact of Mentored Research Experiences to Engage Underrepresented Minority Students

Jonathan Fuchs^{1,2} · Aminta Kouyate¹ · Liz Kroboth¹ · Willi McFarland^{1,2}



FACES for the Future

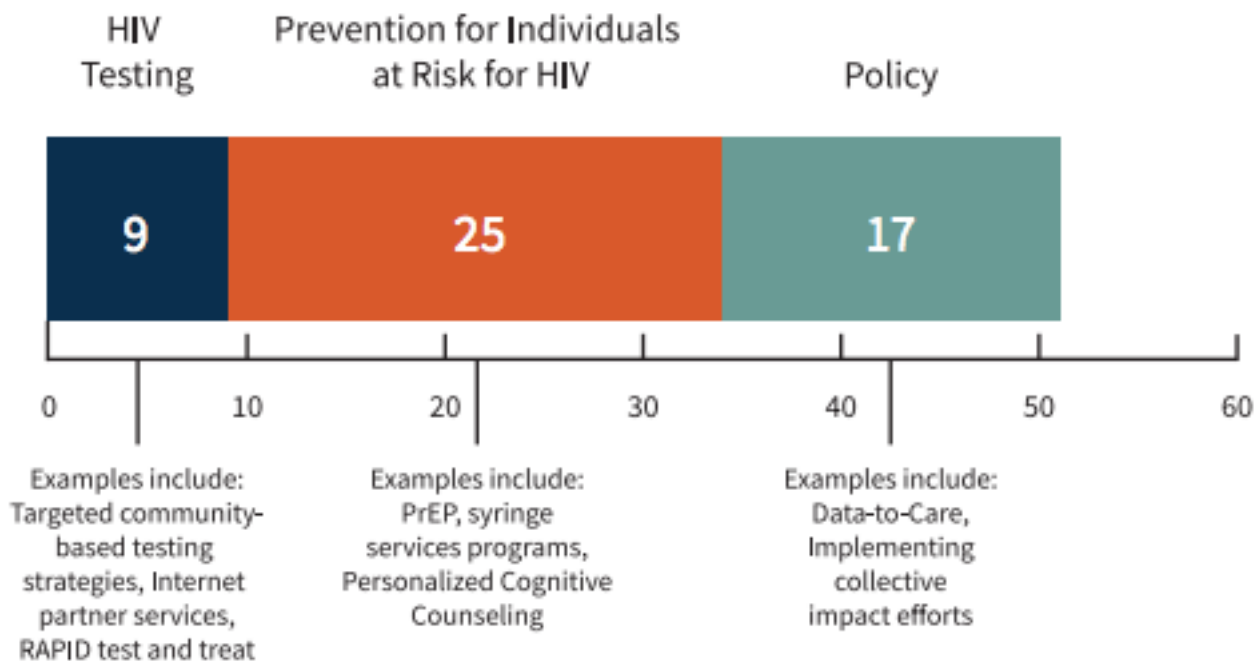


- Partnership with the Public Health Institute (PHI) and John O'Connell High School to create meaningful placements for students in PHD and throughout DPH

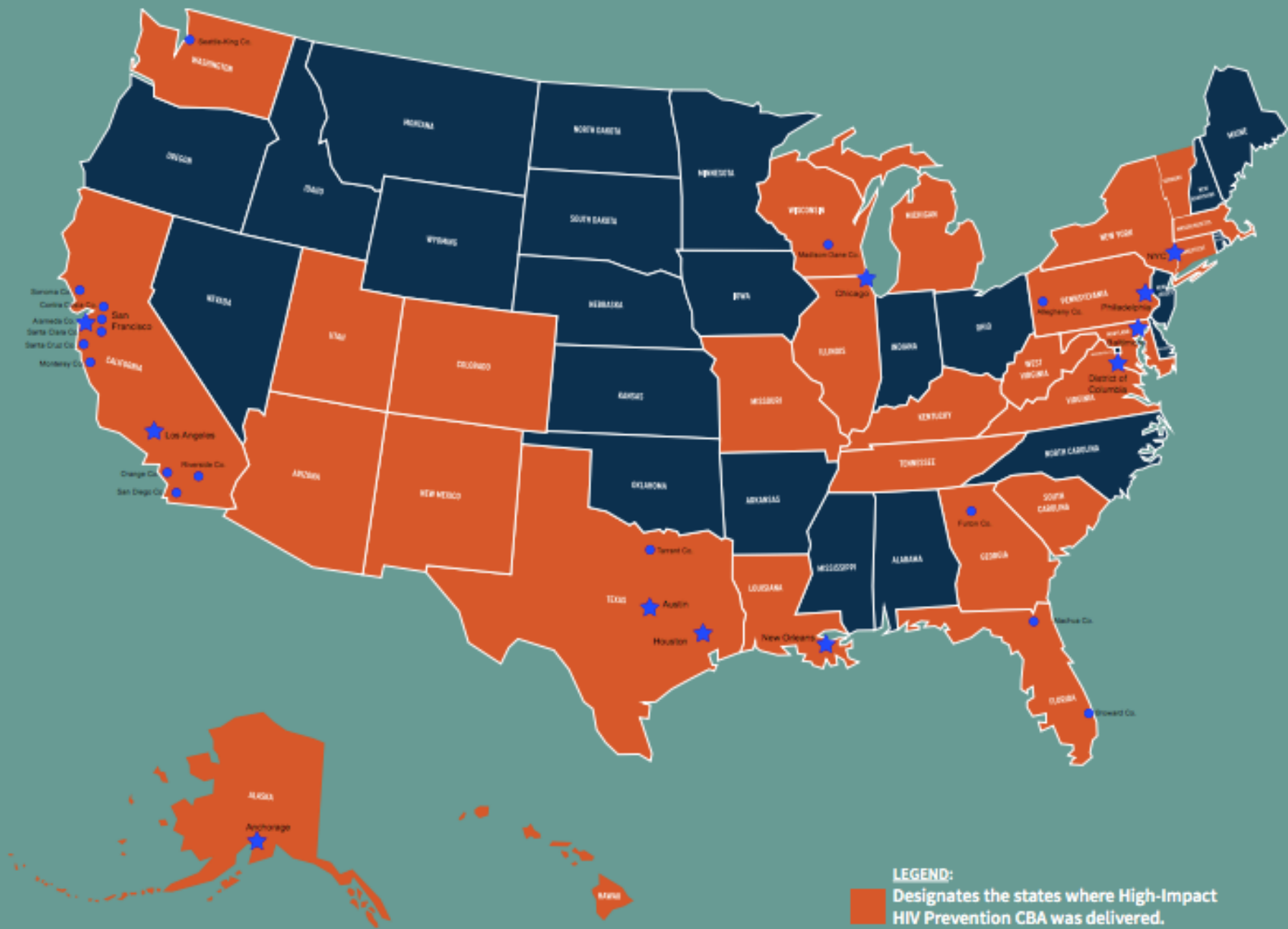
National CBA for Health Departments in High Impact HIV Prevention (getsfcba.org)



Number of CBA Requests (n = 51)



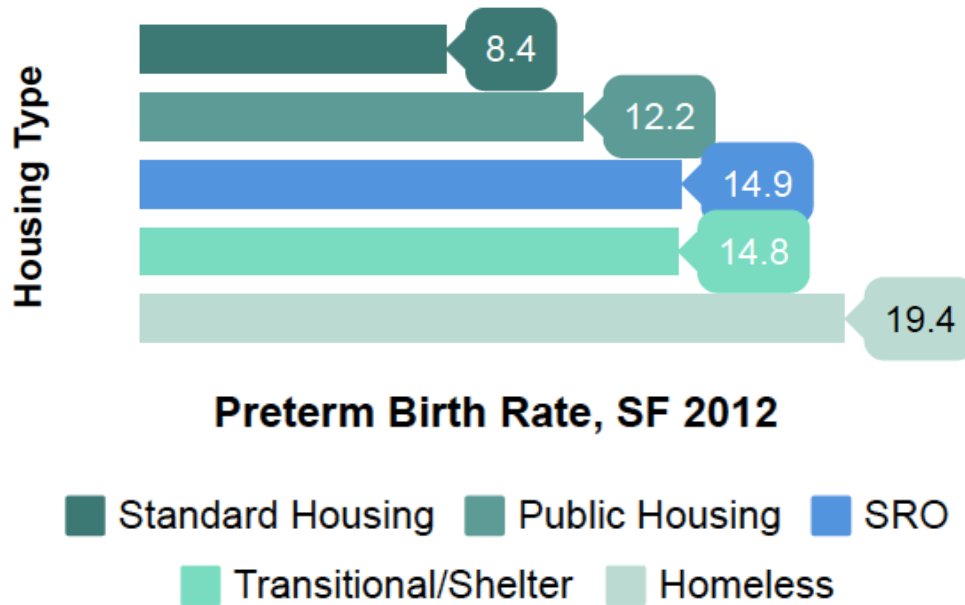
Jurisdictions Receiving High-Impact HIV Prevention CBA, 2017



PrEP and Public Health Detailing Institutes



California Preterm Birth Initiative: the Benioff Community Innovator Community/Academic partnership



womens
community
clinic



POPULATION HEALTH DIVISION
SAN FRANCISCO DEPARTMENT OF PUBLIC HEALTH

- In-depth interviews with **56 systems stakeholders**
- Mama Sharing Focus Group Sessions with **89 mothers with lived experience**



Digital Storytelling



Summary

- CLI aims to foster a **culture of learning, trust and innovation** using multiple approaches
 - Competency-based assessment, understanding emerging needs, and developing training collaboratively with other branches
 - Increasing emphasis on training series and longitudinal engagement
- **National capacity building assistance** contributes to our local work
- Ongoing commitment to recruiting the **next generation of public health leaders**
- **Engaging community partners** to generate evidence
- **Tell our stories** to broad audiences

Questions?



POPULATION HEALTH DIVISION
SAN FRANCISCO DEPARTMENT OF PUBLIC HEALTH